



*A revolution in water purification*

**SCALE BLASTER®**

*The healthy alternative to water softeners*

**Commercial Electronic Descaler  
Model # DISH-1200**



**Premium Model — up to 1½" Pipe  
special wave signal for dishwashers only**

# Scale Blaster® - the electronic descaler

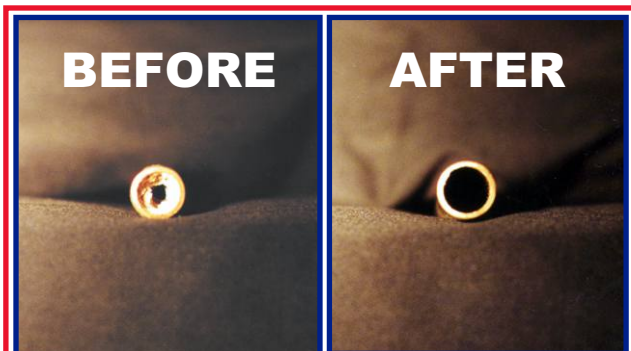
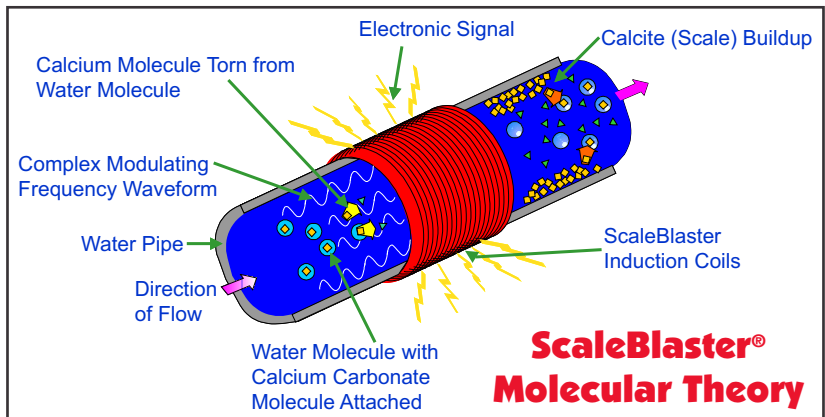
## Revolutionary Breakthrough in Technology!

**S**caleBlaster's® signal cable produces an oscillating and complex modulating frequency wave form that produces an inaudible sonic impulse that changes the electrical and physical properties of the scale-forming calcium molecules. This causes the adhesive properties of the calcium carbonate crystals and other minerals to repel rather than adhere to pipes, fixtures and remain suspended in the water. This action stops any further build-up of scale and because the solubility of the water is increased, existing scale is taken back into the water and gradually removed.

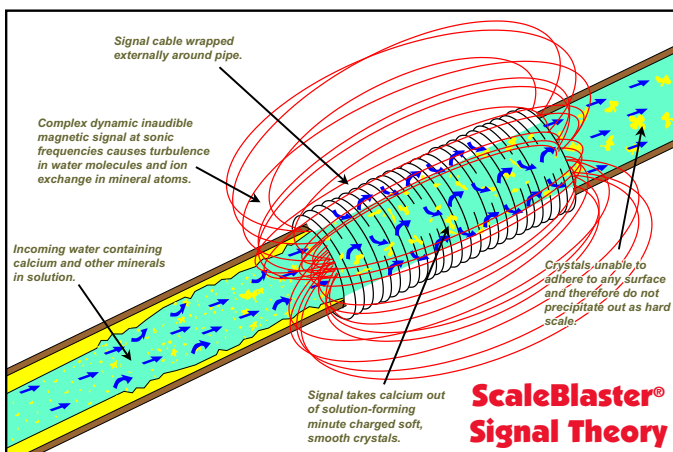
## Absolutely No Maintenance Required

Up until now, the only other solution to your hard water problems was a water softener...

| WATER SOFTENER                              | SCALEBLASTER®                                  |
|---|--|
| Expensive to purchase                       | Inexpensive to purchase                        |
| Requires constant maintenance               | Never needs maintenance                        |
| Makes skin feel dry                         | Makes skin feel softer                         |
| Makes water feel slippery                   | Makes water feel "silkier"                     |
| Soap suds difficult to remove               | Soap suds wash away easily                     |
| Exchanges calcium for salt                  | Does not require salt                          |
| Harmful for people on salt restricted diets | No effect with people on salt restricted diets |
| Requires regular service calls              | Requires no service calls                      |



Actual photographs of household pipe before installation of **ScaleBlaster®** and 32 days later. The pipe was completely descaled. Testing done by **Centre Analytical Laboratories, PA.**



## DISH-1200 ELECTRONIC DESCALER SPECIFICATION SHEET

**PIPE SIZE CAPACITY:** up to 1 1/2" pipe size diameter.

Designed for commercial dishwashers use only.

**PIPE TYPE:** PVC, PEX, copper or any non-ferrous based pipe.

**INPUT VOLTAGE/CURRENT:** 100 to 240 VAC, @ < 800mA

**INPUT POWER:** < 30 Watt

**OUTPUT VOLTAGE:** 5V (open circuit).

**OUTPUT CURRENT:** 1500 mA on each of the 2 outputs

**INPUT FUSE (x2):** 1Amp, 250VAC, 5x20mm, fast acting (F1 on pcb)  
(Radio Shack part # 270-1063)

**OUTPUT FUSE (x2):** 4Amp, 250VAC, 5x20mm, slow acting (F2 on pcb)  
(Radio Shack part # 270-1066)

**DESCALING METHOD:** The control box supplies a square wave signal to a coil of wire that is wrapped around the pipe. The signal is changed anywhere from 1,000 to 20,000 times a second, producing a modulating frequency waveform that hits the resonant frequency of the calcium molecules causing them to lose it's adhesiveness.

**ENCLOSURE DIMENSIONS:** 11.75" x 9" x 3.5"

**ENCLOSURE SPECS:** made out of high-impact ABS molded plastic, NEMA 4X rated, UL approved. Mounting brackets included. Weatherproof enclosure.

**SIGNAL CABLE:** 2 sets of 18 gauge stranded wire, 56 feet long per set.  
**WARRANTY:** 5 years parts and labor.

**SHIPPING WEIGHT:** 7.0 Lbs

**CARTON DIMENSIONS:** 15.25" x 14.25" x 4"